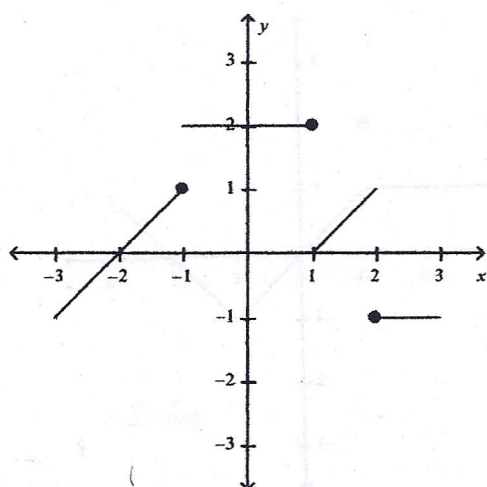
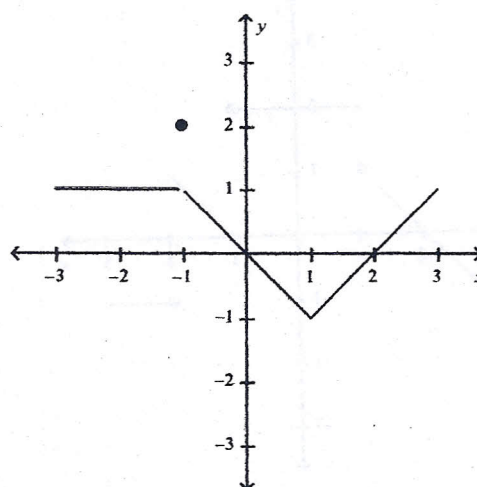


EVALUATING LIMITS

graph of f graph of g

Determine whether the following limits exist. If they do, find the limit.

1. $\lim_{x \rightarrow -2} f(x)$

2. $\lim_{x \rightarrow -2} g(x)$

3. $\lim_{x \rightarrow -1} f(x)$

4. $\lim_{x \rightarrow -1} g(x)$

5. $\lim_{x \rightarrow 1} f(x)$

6. $\lim_{x \rightarrow 1} g(x)$

7. $\lim_{x \rightarrow -1} f(x) + g(x)$

8. $\lim_{x \rightarrow 0} 2f(x) + 3g(x)$

9. $\lim_{x \rightarrow -1} f(x)g(x)$

10. $\lim_{x \rightarrow 2} f(x)g(x)$

11. $\lim_{x \rightarrow 0} \frac{f(x)}{g(x)}$

12. $\lim_{x \rightarrow 0} \frac{g(x)}{f(x)}$

13. $\lim_{x \rightarrow 2} g(f(x))$

14. $\lim_{x \rightarrow -1} f(g(x))$

15. $\lim_{x \rightarrow 2} g(f(x))$